



WAUPACA COUNTY
HIGHWAY DEPARTMENT

We build and maintain a quality transportation system for
the safety and prosperity of current and future generations.

2019

Waupaca County Highway
Department Maintenance Facility

181700

March 2019

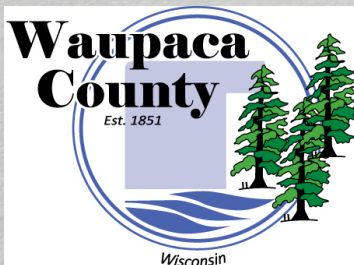


Table of Contents

Executive Summary
Action Items
Schedule
Progress Photos

Distribution List

Casey Beyersdorf
County Commissioner
Waupaca County
casey.beyersdorf@co.waupaca.wi.us
715.258.7152

Mike Rea
Architect
Bray Associates Architects
mrea@brayarch.com
414.226.0200

Paul Riederer
Project Manager
Miron Construction Co., Inc.
paul.riederer@miron-construction.com
920.969.7044

Our *commitment* reaches beyond construction;
our *passion* brings *dreams* to life.

Executive Summary

- ◆ Highway Department Building steel and precast erection is completed in Unit B Repair and Fabrication Shops. Unit C Vehicle Garage precast and steel erection has started.
- ◆ Roof insulation and membrane are in place over entire Unit B Repair, Fabrication, Tire and Parts Shops.
- ◆ Unit C Vehicle Garage steel framing and precast wall panels and floor planks are being erected.
- ◆ Cold Storage Building steel framing is near completion.
- ◆ Sand Storage Building framing and roofing is complete.
- ◆ County Salt Storage Building is near completion.



Southeast View from County A



Unit B Precast, Steel Framing and Roofing Complete

We exist to create...

Relationships

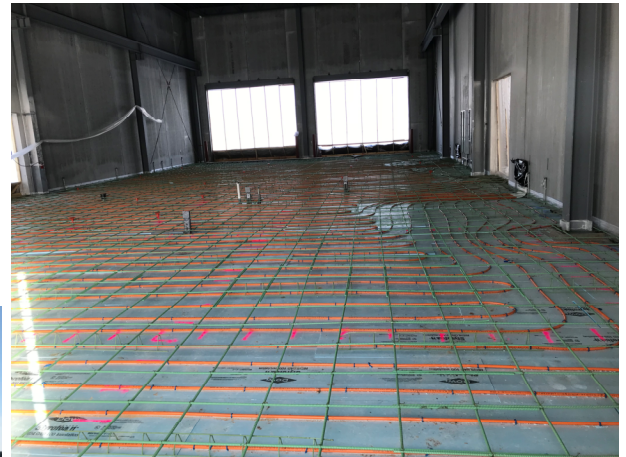
...built on honesty and integrity, with clients, partners, and employees. At Miron, people come first.

Action Items

- ◆ Roof Storm Drains are installed and lead to detention pond.
- ◆ Electrical rough-in in floor slabs is in process.
- ◆ HVAC in-floor heat tubes and ductwork are in process.
- ◆ Unit B Fab Shop floor is poured and Repair Shop is enclosed and temporary heat is on.
- ◆ Steel erection at Unit A is complete. County Highway Commissioner set steel beam.
- ◆ Unit C steel and precast are ongoing. Steel joists are on site.
- ◆ Unit B concrete floors are approximately 50% complete.
- ◆ County Salt Shed is ongoing
- ◆ Unit A Office Area steel is complete and metal stud framing is ongoing.



Waupaca County Highway Commissioner
Setting Steel Beam in Office



Unit B—Fabrication Shop
In-floor Heat Tubes and Electrical Rough In

We exist to fulfill...

Dreams

...and assist our clients in turning
their visions into realities.

Schedule Summary

- ◆ Weather has been a further deterrent during the past four weeks. Five days were lost due to extreme weather in February 2019.
- ◆ Roofing over Unit B Repair Shop, Mezzanine, Parts and Fab Shop is complete. Solar Tube skylights are complete in Unit B.
- ◆ Concrete floor is complete in Fabrication Shop. Concrete floor is prepped for west side of Repair Shop. Unit B Mezzanine concrete topping is poured.
- ◆ Steel erection in Unit A is complete. Wood framing to begin; materials are on site.
- ◆ Sand Shed framing and roofing is complete. Doors to be installed at a later date.
- ◆ Salt Shed framing is complete and roofing is in process.
- ◆ Cold Storage steel erection has started and near completion. Roof panels and wall panels starting soon.



Unit B—Repair Shop Service Trench Wall Poured,
Electrical Rough In Underground and Temporary
Enclosure is in Place

We exist to serve each...

Community

...in which we live and work, giving
back whenever and wherever we
can.

Progress Photographs



Unit B Fabrication Shop Floor Poured



Unit C Steel Roof Joists On Site

Progress Photographs



Unit B—Mezzanine Getting Ready to Pour Concrete



Unit A Office Area Structural Steel Framing Complete. Exterior Steel Framing Ongoing

Progress Photographs



County Salt Shed Roof
Sheathing Ongoing



Unit E—Cold Storage
Framing is Ongoing